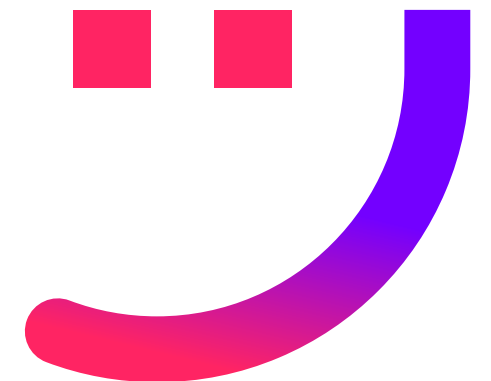


UNPACKING THE TRUE VALUE OF ATTENDED AUTOMATION

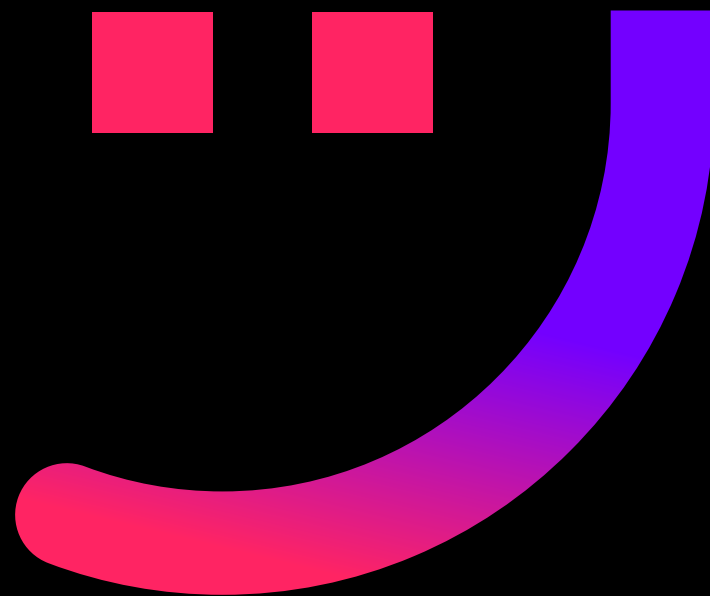
An automated Desktop Assistant for every employee as a sustainable enabler of digital transformation

About NICE RPA

NICE has been setting industry-wide standards in Robotic Process Automation domain for over 20 years. NEVA is NICE's innovative, fully integrated AI-powered automation platform. It unlocks the full power of RPA, combining the best of attended automation with the advantages of RPA and AI-based process discovery grounded in real data and insights. It enables intelligent process optimization while unleashing employees' potential to ensure exceptional customer experiences. We develop and manage our automation suite from a single platform, hold the largest scale automation projects in the market, and are known for driving digital transformation across the enterprise.



OVERVIEW & TABLE OF CONTENTS



With the trend of digital transformation rapidly making its mark within the global economy – every business at some point will need to digitize its business operations to remain relevant and competitive. A critical element in any digital transformation initiative is Attended Automation. This paper will address the importance and

complexity of the desktop environment within organizations today and also reveal the significant impact and ROI generated from attended automation initiatives. In addition, the specific capabilities and underlying technology needed for truly effective and transformative Attended Automation initiatives will be unpacked.

Introduction	5
Digital Transformation and Automation – How does it work?	7
Attended Automation Unpacked – The True Face of Attended Automation	9
Attended Automation in Action – Business Cases Illustrating how Attended Automation Works	11
Delving Deeper – The Dynamic and Complex Nature of the Desktop Environment	15
Key Capabilities – for Attended Automation Success	17
Closing Words	22

INTRODUCTION

Whilst a common concern is felt worldwide around the uncertainty of human jobs amidst the next technological revolution in Artificial Intelligence (AI) – Attended Automation is designed to work in collaboration with human employees, enabling them to focus on more high-value tasks that require a human touch. Although Robotic Process Automation (RPA), in general, has seen significant growth and adoption on a global scale, it only partially addresses the digital transformation challenge. Since Attended Automation exists to enable the best potential of human beings while also effectively and intuitively aligning humans to any organizational change, it is a necessity to ensure true and sustainable digital transformation for longterm success. Whether organizations aggressively adopt Robotic Process Automation or chatbot solutions, to support both the automation of repetitive tasks and the availability of customer self-service channels – humans will always be central to the proper functioning and sustainability of these solutions. The role of humans is augmented further by aligning Attended Automation technology to customer-centric operational processes.



DIGITAL TRANSFORMATION AND AUTOMATION

How does it work?

Robotic Process Automation, Cognitive Automation, and Attended Automation are the three types of process automation technologies at the core of digital transformation. The Process Automation platform should form the baseline or foundation from which the digital transformation will emerge. To deploy all three technologies seamlessly, organizations need to invest in a comprehensive and unified Process Automation platform. Such a platform should hold all the capabilities to perform many different types of automations (including the integration of cognitive technologies into various operational processes). Attended Automation is the central orchestrator or glue, holding these 3 key automation technologies together, ensuring that humans are fully aligned to both customer facing and back office processes. Attended Automation essentially functions as a personal digital assistant to each and every employee, by giving employees real-time, contextspecific assistance as and when needed at various points within an operational process. This has proven to reduce the time needed for employees to adopt new processes, technologies, organizational policies, new product info (to name a few) during periods of organizational change. True and robust Attended Automation capabilities provide an intelligent and highly customizable framework to align the human workforce with technology.



ATTENDED AUTOMATION UNPACKED

The True Face of Attended Automation

Attended Automation in its truest form comprises of software robots residing within each employee's desktop. The robots have cognitive intelligence enabling them to navigate the complexities and dynamism of the desktop environment. This robust functionality enables them to emerge as and when the employee may need assistance or real-time process guidance. The way in which attended robots communicate with employees is via an intelligent, interactive screen. These interactive screens can be fully customized to closely align with the role and responsibilities of the employee to assist individual staff to achieve their specific KPI's or performance targets.

The close and unique alignment with each individual employee's desktop environment, with an ability to offer real-time assistance and process guidance, unlocks many value drivers for enterprises today.



While the deeper value drivers and business cases will be explored at a later stage in this paper, some high level examples of the business value generated from Attended Automation include:

- On the job training via the real-time process guidance reduces the time and cost involved in training and onboarding of new staff members.
- Offloading the admin driven and repetitive tasks onto attended robots, greatly simplifies operational processes for employees, enabling them to work more accurately and efficiently.
- So often the personality profiles of customer service staff are extravert people who love to interact and connect with customers. These personality types are typically demotivated by all the repetitive and mundane tasks that form a part of customer service job specs. With each staff member essentially having their own personal digital assistant to take over all the admin driven tasks that require speed, accuracy and efficiency, human staff experience increased motivation and job satisfaction as a result of being freed up to focus on what they love most - interacting with the customer on a human level. In addition, this frees up human staff to play a more valuable and consultative role to the customer by way of guiding and advising them through more complex requirements.
- Attended Automation capabilities enable organizations with more business process agility. For example if a new process in the form of a changed company policy needs to be introduced and implemented, it is as simple as creating a new solution file or rule. The new process can come into full effect immediately, with full alignment to employee actions. As employees arrive at work and access their updated Attended Automation client, they will be intelligently informed of the new process and guided through each step in real-time. This agility allows for quick alignment of staff to new or changed operational processes.

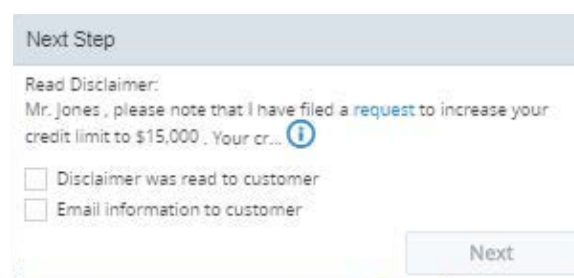
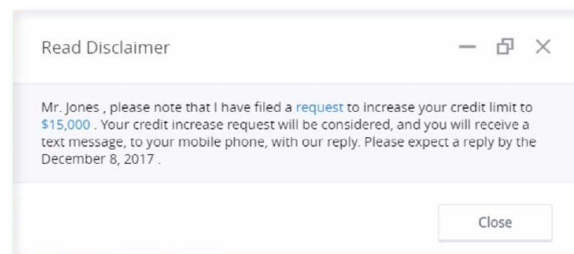
ATTENDED AUTOMATION IN ACTION

Business Cases Illustrating how Attended Automation Works

As mentioned previously an interactive screen is an intelligent communication tool used to communicate with the user/ employee. Attended Automation interactive screens should have an engaging and relevant interface and design. They can be fully customized with links to obtain additional info quickly as well as pre-programmed with applications, enabling employees to provide new levels of service efficiency to their customers. Essentially Attended Automation robots are natural integrators, where they are able to integrate into various enterprise applications, grabbing relevant information from varying sources and then summarizing all the relevant issues to the employee via the interactive screen.

1. Compliance

The rich, interactive screens and robust integration capabilities, enable Attended Automation to provide real time guidance and assistance to employees. This ensures full employee compliance at each stage of a process. An example of how real-time process guidance supports employee compliance to relevant policies and regulations is through a Compliance Script. The Compliance Script is presented to the employee through the interactive screen, in the form of a disclaimer which needs to be read to the customer. Furthermore, the system should produce call summary notes, detailing all the actions that took place during the call with the customer. The call summary notes should be automatically transferred to the CRM application at the end of the call. There should also be an option to e-mail the call summary notes to the customer. Since the call summary notes act as proof of what transpired during the call, ensuring that they are updated in the CRM system and shared with the customer, may be an important part of an organization's compliance process.



2. Next Best Action

Another example of real-time guidance is presenting the next best action to the employee via the interactive screen. The system can detect issues that may require specific actions from the customer e.g. the deadline for the customer to pay his/her credit card bill. The interactive screen is designed to prompt the employee with information about specific pending issues or required customer actions and it does so with a recommended script. In this scenario the interactive screen has the capabilities to enable the employee to assist the customer to settle his/her credit card bill on the same call. The interactive screen will provide a link to the payment portal application, enabling the employee to proceed with initiating the payment in real-time. This is also a next call prevention measure, taking away the need for the customer to call again to settle his/her credit card bill. Next best action scripts can also guide employees to upsell or cross sell to customers at the best moment, in realtime. The system will match the most relevant offer to the customer based on his/her profile and purchasing history, which will be presented to the employee via the interactive screen in real-time.

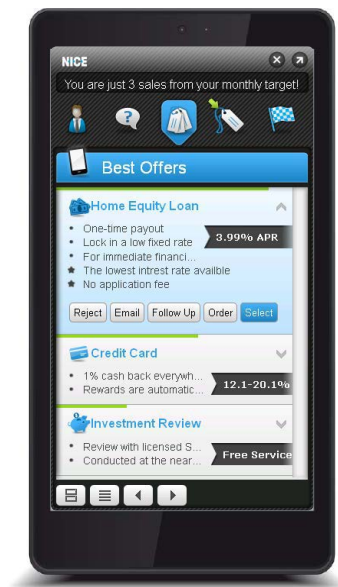
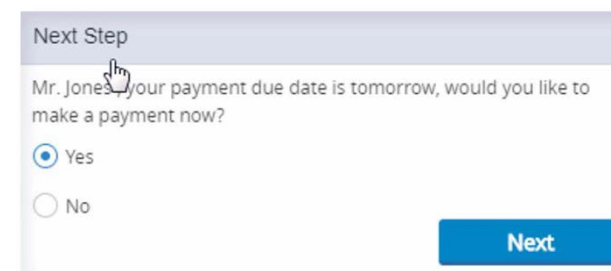


ILLUSTRATION OF A CALLOUT SCREEN SHOWING OFFERS THAT ARE MOST RELEVANT TO THE CUSTOMER

ATTENDED AUTOMATION IN ACTION

3. Process and Work Optimization

- **Single Screen View of Data from Multiple Applications**
The attended robots can integrate into any application (including CRM systems) to grab information about the customer. All of this data is conveniently summarized and categorized in the interactive screen for the employee. This saves the employee the time and effort of manually opening up multiple applications and searching for the relevant information.
- **Workload Shedding with Unattended Robots**
Customer service representatives have the option to trigger an unattended workflow to action a customer's request e.g. if a customer has requested to open up a new bank account, the employee can trigger an unattended robot to update the back end systems with the new information generated from the customer interaction. The unattended robots can also be automatically triggered to carry out certain actions on behalf of the employee. This is how attended and unattended automation work collaboratively to achieve end to end business process needs.
- **Exception Escalations**
The close and seamless integration of attended and unattended work flows can enable greater efficiency in addition to the handling of more complex process scenarios, such as a process error or exception. Here is an example of an unattended process encountering a complication, and requiring the system to switch to attended mode in order to obtain assistance from a human employee.

1. A customer dials in and selects an option on the IVR (Interactive Voice Response) to schedule a delivery.
2. An error occurs, and the system fails to create a new delivery item to schedule.
3. The system then moves into attended mode to alert a human employee to intervene. The process is still automated but in attended mode, where attended robots may send various alerts to the employee by means of the interactive screens. In this case, the interactive screen is prompting the employee to call the customer to confirm the delivery details after which a new delivery item to schedule is generated and the employee triggers the unattended automation to complete the process and send a confirmation notification to the customer.

Credit Card

Customer Name: Mr. Douglas Jones
Call Type: Credit Card

Contact Details

Account Name: Jones Household
Address: 1235 Shoreland Blvd, Miami Shores, FL, 33131
Mobile Phone:

Account Number: 144097
Current Balance: \$3,126
Payment Due Date: December 7, 2017

Next Step

Ask: Mr. Jones, how can I help you today?

Data consolidation from multiple sources

This example demonstrates a professional and seamless approach to escalate and handle exceptions with a combination of attended and unattended automation.

4. Change Management Tool

Attended Automation is a powerful tool to embrace during times of organizational change. Take for example a merger scenario, where two business entities become one. This is a highly complex scenario that requires the integration of two different types of operational setups (spanning front and back office functions) into one single and unified operation. The inclusion of Attended Automation enables all employees to speak the same language through the customized step by step process guidance in real-time. Furthermore Attended Automation has been proven to be an effective measure to reduce training requirements for staff. The real-time process guidance offers the employees effective on the job training resulting in meaningful and sustainable learning. New recruits can start their new jobs straight away with the reassurance of knowing that they will be guided every step of the way and supplied with all the support materials they need such as scripts, links and built in applications.



DELVING DEEPER

The Dynamic and Complex Nature of the Desktop Environment

We have already established the essential role that human employees fulfill among various digital technologies within any enterprise wide digital transformation initiative. A critical component to understand in-depth is the dynamic nature of the desktop environment, due to its complexity from continuous human intervention.

For organizations to truly leverage the capabilities and value drivers of Attended Automation, it is important to understand and master the complexities of the desktop environment. As humans are continually opening up many different applications and interacting with different screen elements, a rich and comprehensive Attended Automation solution should effectively navigate the following desktop complexities:



1. Multiple Screens from a Single Application

This refers to a situation when a user opens up more than one screen from a single application at a given point in time. When two different windows from the same application are open with different customer info, the technology needs to ensure that the automation is initiated from the correct window with the correct customer information.

2. User Intervention

Another dynamic element illustrating human activity within the desktop environment are cases when the users may close various applications that break the screen connectivity and stop the automation. The technology has a mechanism in place to detect the exact location of the screen connectivity break, enabling users to resume the automation with little to no downtime.

3. Minimized Applications

Typically when employees are working on their desktops, many applications will naturally be minimized. The Attended Automation technology should have the capabilities to connect into minimized applications while running an automation. This ensures the proper running of the automation in the background while the employee may be working on something else on the desktop.

4. Different Resolutions and Screen Sizes

Different desktops will vary in resolution and screen size depending on the individual preferences of the employees. The technology should be able to read and function well from a variety of different resolution settings.

5. Interfacing with Unattended Robots and Chatbots

Some additional yet critical complexities to master is the ability of the attended robots to interact with unattended robots by triggering unattended process automations. Likewise attended robots should have the capability to communicate with chatbots. Should a chatbot receive a complicated customer query that cannot be actioned by unattended robots (in the back end), the query should be routed to an attended robot to alert a human employee to intervene. This multi-faceted capability should be supported by a robust and unified automation platform with the ability to carry out different types of process automations. This also enables the added benefit of scalability i.e. increasing the number of robots in order to support an increase in operational activity during seasonal or peak periods. This is an initial list of some of the desktop complexities that need to be fully supported by a robust Attended Automation solution.

KEY CAPABILITIES

For Attended Automation Success

The following features are essential to unlock tangible and sustainable business value from investments in Attended Automation technology:

1. AI Based Tool for Automation Discovery

Automation discovery, involving the selection of operational processes which are ripe for automation, is an integral part of the RPA Attended journey. Since automating the wrong processes is a proven factor commonly contributing towards Automation project failures, AI and real desktop data is a reliable way to bullet proof the discovery phase of selecting business processes to automate. [NEVA Discover](#) is a home-grown AI infused RPA diagnostic tool, unique to NICE, and designed to pinpoint the specific processes which are ripe for automation, yielding the highest ROI for the organization. The solution operates with precision and speed utilizing Desktop Analytics, Unsupervised Machine Learning and Deep Learning technologies.

2. Rich, Flexible & Interactive User Interface

Interactive screens are an essential part of Attended Automation forming a mode of communication between the attended robot and the employee. In order to create an optimized environment for the employee to work more productively and efficiently, the ability to create a rich and customizable UI for the interactive screens is essential. For example, the next best action feature is best displayed as a wizard-like interactive screen.

3. Connectivity

Robust desktop connectivity capabilities are needed to support the dynamic and unpredictable nature of the desktop environment. Object based connectivity is the best option to achieve stable connectivity to ensure the continuity of process automations on the desktop. In the event of organizations not being able to install applications on the desktop, then surface automation is a form of connectivity used to operate in VDI (Virtual Desktop Infrastructure) environments. In order to cover all bases, using a vendor who provides a combination of Object-Based connectivity and surface automation (utilizing Image Based Analysis, aka - IBA) is recommended.

4. Real-Time Triggering

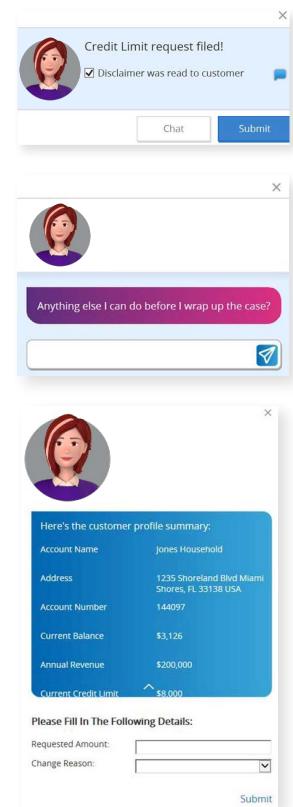
Real-time triggering is another key capability distinguishing the more intelligent attended automation solutions in the market. This capability enables the triggering of real-time events from the user's screen and should be able to support a wide range of employee desktop actions and scenarios in real-time. The intelligence of this capability is rooted in its ability to support a wide and varied range of scenarios spontaneously. Take for example a scenario where the employee is interacting with a customer telephonically and the customer spontaneously requests the employee to assist him/her with paying off their credit card. This capability takes away the need for:

1. Manual, real-time scheduling (which is based on demand, rather than real-time triggers)
2. Invoking automations from API's (which is not based on real-time events on the employee's desktop)

5. Unified Framework

An intelligent unified framework is a crucial feature, in which all process automations can be invoked from. This powerful framework essentially acts as the central orchestrator of all the automated workflows. For the attended robot to interact intuitively with the employee, the unified framework should enable the Automation Developer to add and work with an interactive user interface. This interactive interface is what will enable the employee to engage with the attended robot conversationally, using text or voice activated chat. A deeper layer of interaction between the employee and the attended robot in the form of voice and free text activation (rather than just integration with applications) is made possible by providing easy integration with an NLP (Natural Language Processing) engine. Additionally, the user interface also enables the employee with the flexibility to invoke any automation on demand via free text and voice activation. The framework should also easily integrate with chatbot technology.

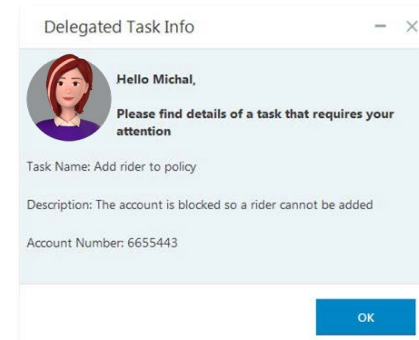
Developers benefit greatly from working with a pre-configured framework, with built in functionality, as it takes away the need to build logic, therefore reducing development time and effort. Automations can therefore be intuitively and easily built by the developer and naturally invoked by the user from contextual information and NLP. Since the NEVA Unified Framework intuitively integrates with NICE RPA's unattended robots as well as various cognitive technologies - this enables users to leverage multiple types of process automations (supporting complex deployments), all from a single platform.



KEY CAPABILITIES

6. Seamless support of human in the loop use cases (Delegation to Attended capability)

Human involvement is an essential requirement when running automated processes today, since process errors or exceptions can occur and human judgment may be required to resolve each issue optimally. Exceptions may comprise of processing errors or human intervention may be required for compliance purposes e.g. a human may need to authorize a certain step in a more sensitive compliance driven process. The NICE RPA Delegation-to-Attended capability enables either a NICE unattended robot or any third-party application (via an API) to delegate a specific task to NEVA who in turn will intuitively communicate the specific issue directly to the employee. By utilizing the NEVA framework for corrective actions, employees are enabled to efficiently and accurately handle process exceptions due to the realtime guidance that they receive from NEVA. This unique and seamless collaboration between NEVA and the employee boosts the success rate and SLAs of deployed automations. The Delegation to Attended capability enables automation developers with the flexibility to design NEVA callouts that best support the organizations needs e.g. structured callouts with step by step process guidance or conversational callouts can be developed.



7. Multi-Instance Support

A very common behavior of desktop users includes opening of multiple instances of a single application. The attended robot therefore needs to be able to connect to the correct instance in order to work with the correct data within the automation. In such a scenario there is a need for the attended robot to be able to connect to the right instance. Here is an example:

An employee receives a call from customer A while the CRM application is populated with customer A's information. Just as the employee is about to wrap up the call, simultaneously a new call comes in with a new instance of the CRM application being populated with customer B's information. The technology needs to support the employee to move freely between the two instances all the while giving the attended robot the ability to apply the right logic to the correct instance.

8. Low Footprint Robot (Minimal CPU Consumption)

To provide a valuable and reliable service to customers, employees need their systems to perform with speed and efficiency. To enable this, a low footprint is needed in terms of CPU and memory consumption in order to not obstruct and slow down the day to day activities of the employee. When choosing an automation vendor, it is essential to verify and check that the software will have a minimal impact on the speed and performance of the employees' machines.

9. Real-Time Responsiveness

Real-time responsiveness is an important capability that will impact the performance of an employee's desktop. Ideally the robot should have the capabilities to respond to a request quickly, in real-time. The underlying technology that is needed to enable real-time responsiveness is triggering. Triggering enables the robots to only respond to a specific event when triggered by an employee's action on the desktop, as opposed to polling which continuously monitors the desktop, utilizing too many resources in the process.

10. Centralized Monitoring and Control

A centralized control room is necessary for the effective management of thousands of workstations with varying profiles. The control room is designed to hold and display all the details surrounding the functioning of the attended robotic workforce. Should an error occur, this can be identified easily taking away the need for IT departments to search for logs. NICE's Control Room capability enables the management of many thousands of users, supporting high volume and more complex attended process automations. The system is fully scalable and supports the addition of more attended robots to support the additional employees, who may be recruited during peak or surge periods.

KEY CAPABILITIES

11. Analytics – Business Insights from Data Collection

The ability to measure, quantify and analyze the performance of a process automation is essential, making analytics and reporting an important capability for Attended Automation deployments. During the design phase, the data to be collected, should simply be marked and during run time (when the process automation is running), the data is collected and made available for reports. An integrated Business Intelligence (BI) tool can then be used to display the out-of-the-box reports in addition to producing customized reports, based on the data collected.

12. Optimized Deployment Mode for Desktop Terminal Server Environment

Running applications from both desktop and remote, Citrix like, environments is common practice for most organizations today since business processes are typically performed across different environments. To handle this type of scenario, it is necessary for attended robots to reside in both the desktop and virtualized environments where they should have the capabilities to communicate and transfer data between each other. This capability enables process automations within a complex environment by seamlessly aligning desktop activity with remote activity.

13. Deployment & Scale

Packaging and distribution of software is a significant undertaking by any IT division. Unlike unattended automation software, attended robotic software requires technical expertise to update the logic or robotic configuration in an efficient manner. NICE provides a built-in mechanism to update the logic and software installation, taking away the need to repackage. An auto update mechanism has the capability to push software updates to the desktop without the need to involve IT. When employees turn off their machines, the desktop software will connect to the server to check for and download updates.

Additionally, Attended Automation deployments are generally volume driven, particularly when implemented in a call center environment where thousands of agents need to be supported, each with their own personal desktop assistant. It is critical to ensure that the automation platform not only supports large scale attended automation deployments, but the support should also extend into accurately managing, monitoring and troubleshooting any relevant issues. It is also advisable to select an automation vendor with many large scale, complex attended automation projects under their belt, with solid references.

14. NEVA InApp – Integrate into the organization's web applications, for seamless end-user experience

The ability to integrate contextual content into the organization's web applications, provides a seamless end user experience. All the information they need to serve the customer best is available within a single application.

CLOSING WORDS

In a race to achieve digital transformation success, all the while building competitive advantage through service differentiators and operational efficiencies – Attended Automation (with the correct capabilities and underlying technologies) is an essential investment for enterprises today.

Whats more, powerful automation platforms should intuitively integrate with cognitive technologies to successfully drive organizations into the digital era.

